

Circuit Protection Solutions

Product Guide



Low Voltage Fuses and Fusegear

NH DIN Industrial fuse links and bases

- Conforms to IEC 60269 & VDE 0636
- General purpose full range & Motor protection applications (Class gG/aM, gTR)
- Rated breaking capacity - 120kA, current rating from 2A to 1600A
- Available with Dual indication in sizes C00(000), 00, 1, 2, 3 (excluding size 4A)
- Fuse Holders available for all fuse-links sizes



D & DO Low voltage fuse system

- Conforms to IEC 60269 & VDE 0636
- Rating breaking capacity - 50kA, current rating from 2A to 100A
- Available in 7 sizes: DI, DII, DIII, DIV, D01, D02, D03
- Fuse bases for panel and Din Rail mounting with accessories available screw caps, gauge rings,....



British standard fuses and fuse holders

- Conforms to BS88 Part 1, 2 & 6, IEC 60269 Part 1 & 2, ASTA Certified
- General purpose full range protection - class gG & gM
- Ratings of 415V, 550V & 660 Vac, current rating from 2A to 1250A
- Fuse Holders available for all fuse-links sizes up to 100A



IEC Cylindrical fuses and holders

- Conforms to IEC 60269 Standards
- General purpose full range protection (Class gG) and motor protection (Class aM)
- Rated breaking capacity of 20kA to 120kA, rated at 400Vac to 690Vac
- Available in sizes 8x32, 10x38, 14x51, 22x58mm
- Fuse Holders available for all fuse-links sizes



Low Voltage Fuses and Fusegear

Type J - Feeder pillar

- Designed for use with wedge type fuse carriers
- Type J Fuses are available in cylindrical slotted or non slotted tag versions
- Comply with BS88 Part 5 requirements
- Available in 76mm, 82mm and 92mm centres



House service cut-out

- Asta certified & tested in accordance with BS1361
- 33kA breaking capacity
- Available in 2 diameters -22.2mm & 30.2mm
- Both available in ratings up to 100A at 415Vac



North american standard

- UL Listed and CSA Certified
- Current ratings of 100mA to 6000A, rated from 125 to 600Vac
- Sizes: Midget, Class CC, Class RK5, RK1, ClassCC, G, J, K5 & H, L, RK1, RK5, T, Plug Top Fuses
- Modular fuse holders (finger protection) for Midget and Class CC fuses, Finger safe protected fuse base for class J fuses and a wide range of fuse blocks



High Speed Fuses and Fuseholders

Square body

- Conforms to EN IEC 60269-4, DIN 43653 & 43620, UL Recognition and CSA component acceptance
- Current rating from 10A to 7500A, rated at 660V & 3000Vac, rated breaking capacity - 300kA
- Sizes 000, 00, 1, 2, 3, 4, 5



British standard

- Conforms to BS88 Part 4, IEC 60269-4
- Current rating from 6A to 900A, rated at 240V & 690Vac, rated breaking capacity - 200kA
- Trip indicator fuselinks available and micro switch for remote indication



High Speed Fuses and Fuseholders

IEC Cylindrical - Ferrule style

- Conforms to UL/CSA, IEC 60269-4
- Current rating from 1A to 100A, rated at 150 to 2000Vac, rated breaking capacity - 200kA
- Sizes 6x32, 10x38, 14x51, 14x67, 21x51, 22x58, 20x127, 25x146



North American

- North American style fuses provide an excellent solution for medium power applications
- Conforms to UL/CSA
- Current rating 1 to 4,000A - 130 to 1000Vac and 130 to 800V dc



Medium Voltage Fuses

DIN Fuse-Links

- Conforms to DIN 43625, EN IEC 60282-1, VDE 0670-4
- Ratings: 6.3 to 400A, rated from 3.6 to 38kV
- Full-range, back up and motor protection applications



Motor Start Fuse-Links

- Conforms to UL, IEC DIN 43625 and British Standard
- Ratings: 3.6A to 400A, rated from 2.75kV - 7.2kV
- Optional higher ratings



Oil Fuse-Links

- Conforms to IEC 282-1, BS 2692-1 and ESI standard 12-8
- Ratings: 6.3A to 200A, rated from 3.6 to 24kV
- Fitted with pyrotechnic striker pin



Voltage & Auxiliary Transformer Fuse-Links

- Conforms to BS 2692-1 and IEC 60282-1
- Ratings: 3.15 to 6.3A, rated from 1 to 36kV
- Use in the primary side of voltage transformers



Cooper Bussmann: A Global Company

Cooper Bussmann, a division of Cooper Industries, is the leading source of circuit protection solutions in the global market place. Our solutions are listed for use around the world including meeting agency requirements and international standards, IEC, VDE, DIN, UL, CSA, BS...

Worldwide Presence

Cooper Bussmann worldwide headquarters are in St Louis, Missouri (US) and European headquarters in Burton-on-the-Wolds, Leicestershire (UK)

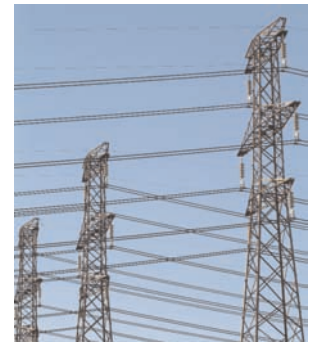
We have manufacturing plants in the US (Black Mountain and Goldsboro - NC, Chicago - IL, Ellisville - MO, Boca Raton - FL), in Mexico (Juarez and Mexico City), in UK (Workington and Burton-on-the-Wolds), Denmark (Copenhagen), India (Pondicherry), Costa Rica (San Jose), Brazil (Itu)

We employ more than 5,000 team members worldwide.



Global Applications and Products

We provide the industry with more than 41,000 fuse types covering the most extensive circuit protection solutions for a wide range of applications: residential, industrial, motor protection, power conversion, medium voltage power distribution, telecommunications, network equipment, electronics and automotive.



Global Capabilities and Support

Customer satisfaction team

Our customer satisfaction teams are market segmented with language capabilities to ensure a quality ordering experience and provide you detailed answers to every inquiry. Whether you are communicating with us via: internet, phone or fax, you are sure to receive quick, intelligent and responsive service satisfaction.



Worldwide distribution

Wherever you are in the world, Cooper Bussmann, can guarantee the right products will be delivered on time, right at your doorstep. Cooper Bussmann has multiple ways to deliver you the goods on time, from the computerised distribution centre in St Louis (US), from the Burton-on-the-Wolds logistic centre or from your local distributor.



Applications engineering team

In the spirit of surpassing customers expectations, the mission of our application engineering teams is to keep customers on the cutting edge with training and technical services. Our team is standing by and ready to help you with technical products inquiries, product cross-referencing, and trouble-shooting. But also about worldwide standards, current code changes, testing standards and safety requirements.



Contact Us:

EUROPEAN HEADQUARTERS

Cooper Bussmann (UK) Ltd
Burton-on-the-Wolds
LE12 5TH
United Kingdom
www.cooperbussmann.com
Tel: 00 44 (0) 1509 882 737
Fax: 00 44 (0) 1509 882 786

WORLD HEADQUARTERS

Cooper Bussmann Inc.
St Louis, Missouri 63178
USA
636-394-2877
www.cooperbussmann.com

Web services

www.cooperbussmann.com

The Cooper Bussmann website makes available free information and other resources that include:

- Product data sheets for complete technical information on Cooper Bussmann products
- Online catalogs for the latest United States and European Products
- Safety BaSICs™ for the essentials of electrical safety
- Training modules for increasing skill levels of customers and end users
- Cross referencing to find the correct Cooper Bussmann replacement for a competitor's fuse

Your authorised Cooper Bussmann Distributor is:



COOPER Lighting



COOPER Crouse-Hinds



COOPER Power Systems



COOPER Wiring Devices



COOPER B-Line